



Turning Liabilities Into Leverage!

# MicroClear® 207 Lift Stations High Impact Grease Digestor

## Product Bulletin

*Environmental Leverage has Lab Analysis Service Available*



1-lb. Water Soluble Bio-Pouch

### Degrades

- Fats, Oils & Grease
- Starches
- Protein
- Malodors
- Animal Fat
- Triglycerides
- Foaming
- Surfactants
- Soaps

### Environmental Leverage® Inc.

812 Dogwood Dr. Suite A  
North Aurora, IL 60542

[admin@environmentalleverage.com](mailto:admin@environmentalleverage.com)

630-906-9791 fax 630-906-9792

[www.EnvironmentalLeverage.com](http://www.EnvironmentalLeverage.com)

**MicroClear® 207** is a high potency, bacteria-laden, powdered formulation, for use in degrading many types of waste. **MicroClear® 207** contains a specially formulated, proprietary blend of microorganisms, micro/macronutrients, and surface tension suppressants/penetrants. Because of the diversity of the microorganism systems incorporated into this product it is specifically developed for use in in situations where there is a particular high impact from fats, oils and grease. The safe, naturally occurring bacteria are present in high numbers to handle difficult organic problems and are very economical to use.

### Enzymatic Activity

Cellulase (CAU).....Units/Gram: 150 Min.  
 Protease (Casein Digesting).....Units/Gram: 35,000 Min.  
 Amylase (Modified Wohlgemuth).....Units/Gram: 55,000-80,000  
 Lipase (USP).....Units/Gram: 400

### Application Instructions for Sewer & Lift Stations

Flow Rate	Initial Dosage	Maintenance**
Up to 25,000gpd	1lb. per week	½ lb. per week
Up to 50,000gpd	1lb. 2x week	1 lb. per week
Up to 100,000gpd	1lb. every other day	1 lb. 2x week
Up to 250,000gpd	1lb. per day	1 lb. 3x week



### Product Advantages

- Greatly reduces labor time
- Enhances BOD/COD removal
- Reduces hydrogen sulfide
- Reduces sludge buildup
- Cost effective/Easy to use
- Changes biomass dynamics
- No special equipment needed
- Increases system efficiency
- Breaks down fat & grease buildup
- Eliminates malodors at their source
- Contains facultative anaerobes
- Contains no chemicals
- Degrades a wide range of complex organic compounds

### Applications of Use

- LIFT STATIONS
- WET WELLS
- SUMP PITS
- SEWER MAINS
- LATERALS
- GREASE TRAPS
- LAGOONS
- TRICKLING FILTERS
- DRAIN LINES



### Packaging of Product

**MicroClear® 207** comes in  
1-lb. water soluble Bio-pouches.  
Packaged in 25-lb. Plastic Pails.  
Bulk packaging upon request.





Turning Liabilities Into Leverage!

# MicroClear® 207 Lift Stations High Impact Grease Digestor

## Product Bulletin

Environmental Leverage has Lab Analysis Service Available



1-lb. Water Soluble Bio-Pouch

### Typical Properties of Product

Appearance.....light tan  
 Fragrance.....mild-earthy  
 Form.....powder  
 pH.....6.8-8.5  
 Shelf-Life.....2 years/u.o.c.  
 Flash Point.....none



### Performance Properties

Effective pH range.....5.2 - 9.5  
 Effective Temperature Ran.....35 - 130°F  
 Bacterial Enzyme Production.....Protease,  
 Lipase, Amylase, Urease, Cellulase

### Storage & Handling

Storage.....Store in a cool, dry place. Do Not Freeze  
 Container.....Keep lid closed on Plastic Pail. Do not store  
 water soluble pouches out of plastic container.

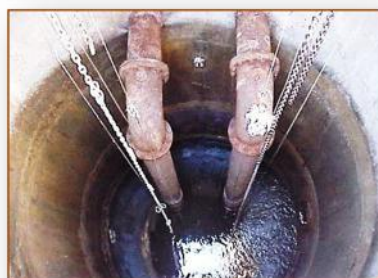
Handling.....Wash hands thoroughly with warm, soapy water

### Bacterial Count

MicroClear® 207.....>1x10<sup>9</sup> (Billion per gram)

### Degrades

- Fats, Oils & Grease
- Starches
- Protein
- Malodors
- Animal Fat
- Triglycerides
- Foaming
- Surfactants
- Soaps



### Environmental Leverage® Inc.

812 Dogwood Dr. Suite A  
 North Aurora, IL 60542

[admin@environmentalLeverage.com](mailto:admin@environmentalLeverage.com)

630-906-9791 fax 630-906-9792

[www.EnvironmentalLeverage.com](http://www.EnvironmentalLeverage.com)

