

such as flow, temperature and loading that impact whether a program will impact just the lift station, the pipes or the treatment plant. The correct dosing and application will impact different variables and determine the impact on all three places. In the past, bacterial vendors or sanitary workers worried only about the lift station. Cleaning up the grease and quickly was the only concern. High levels of bacteria were added to the lift station. This may have cleaned up the lift station, but it just moved the grease down the pipes, clogged up the lines and caused high foaming at the treatment plant. Newer more conservative methods are now used to successfully dose a biological program in a lift station. Slower is better, although many people are anxious and say the product is not working.



What are signs that the product is working- Foaming in the lift station- white foam at first shows the bugs are in a high growth phase, as the foam turns to a light brown, they are getting a little older.

Are there signs of the grease softening?

Are there visible signs of cracks in what was once a solid surface?

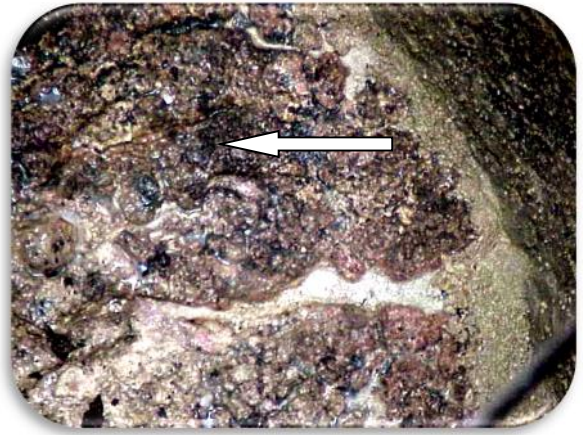
Make sure the biological product is in the water and not just sitting on top of the grease shelf. The product cannot jump out of the water-soluble bag. It needs some access to the water in order to move around, below and above the grease. Try adjusting the water levels in the lift station and move the float a bit higher.

If there is a grease ledge, this is very important, since the water level must be a bit higher for a short period of time to allow the bacteria access to this grease and not just during high flows.

Spaces between the grease, white coloring of the water, some softening and foaming show the product is starting to work.

More free space in the lift station, cleaner lines and floats show the product is doing a good job and on the way to a cleaner lift station.





These have been called "Floating Turtles"- Hard solid formations that float around in the lift station. These can interfere with the pumps and can clog the pipes. Sometimes using a liquid product to spray on these can help reduce their size and shrink them faster.

Raising or lowering the float will not impact situations with turtle.

Cracks starting to form in thick hardened grease



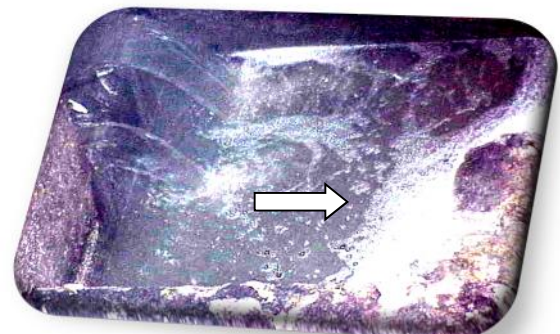
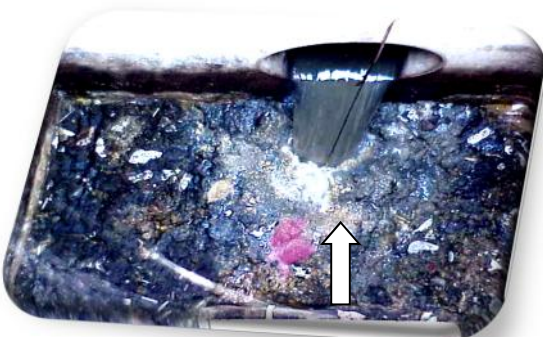
Application of product is improper here, pink product all over the top of the grease and not really in contact with the water



White milky water indicating bacteria is starting to work, cracks are starting to form in the grease; it is starting to soften and a little foaming is present.

Start your biological program today & go from Grease and solids build-up to free flowing water with very little grease Today! Email Elfenvironmental@aol.com or call from phone number below.

Ask about MicroBlock™ our slow release bioaugmentation product.





This lift station in top 2 images, before bacterial product (bioaugmentation) was introduced. There were thick solids built up in the corner & grease crust ledges.

Here is how it looks now after using Environmental Leverage's bacterial products to remove the grease. Proper flow & movement now.

This is a 5 Million Gallon a Day lift station that was filled with years of grease build-up.

Except for a little bit of solids in the upper left corner, most of the grease and solids build-up are gone. Here is the upper right corner- clean and free flowing water as opposed to the above picture prior to addition of our biological products. The grease ledge is gone, the solids and chunks of grease are dissolved and there is circulation of water and better mixing.

To reach our friendly staff for support & products
 call **630-906-9791** or email us at
elfenvironmental@aol.com



1-lb. Water Soluble Bio-Pouch

